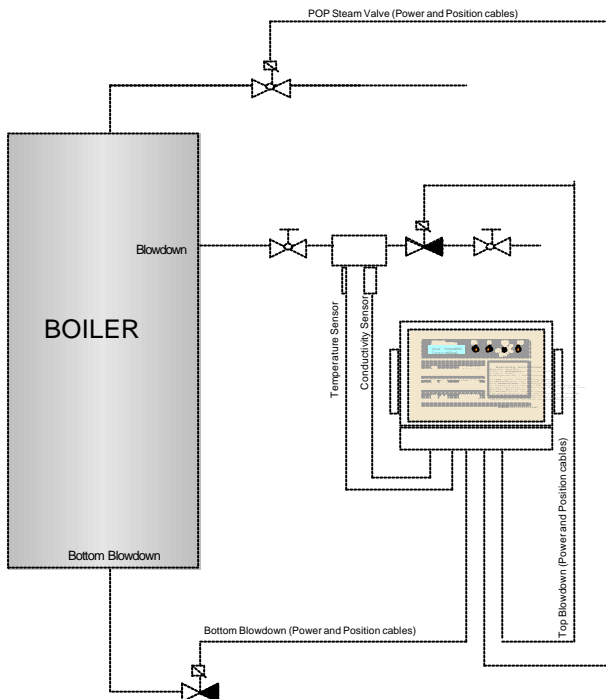


AQTDS Dissolved solids and Blowdown Controller



DESCRIPTION

At a pre-determined interval the controller pulses its scum line blow down valve and measures the temperature and conductivity of the discharged boiler water.

If the conductivity is above the pre-set limit it will pulse the valve open and closed for a few seconds at a time until the conductivity (and hence TDS) falls to within limits, after which it waits for a predetermined time until the cycle starts again.

The CP10 conductivity and Pt100 temperature sensors are designed to withstand the temperatures and stresses involved and are extremely robust.

The system will accept 230/110 Vac input.

The primary functions are: -

- Surface blow down control
- Optional timed bottom blow down
- Pulsed output control for steam valve

The bottom blow down valve and the steam header valve inputs have provision for micro-switch feedback which indicate to the controller the success or failure of the valve opening.

The front panel houses

- LCD display
- Status LED's
- Alarm / Fault LED's

When a valve fails the alarm LED is illuminated.

SPECIFICATIONS

Input power	110/220VAC 50/60Hz
Power requirement	50 watts
Operational temperature	0 to 55°C
Storage temperature	-15 to 85°C
RH	0-95% non condensing
Alarm relay contacts	220Vac @ 1 Amp
Terminals suitable for	2.5mm

Cables

Probes	4 core screened 1mm ² max length 10 metres
Terminations	2.5mm ² screw terminals
Quiescent current	40mA (approx)

Probe

Probe energisation voltage	200mV volts
Standard range	0-5000 uMhos (other ranges available)

Temperature compensation curve	2% per °C
Auto compensation of standard probes	0 to 200°C
Electronics temperature coefficient	0.18% per °C

Controls

Conductivity	Set point
Surface blowdown	On Time in seconds
Surface blowdown	Off time in minutes
Bottom blowdown	Period (in minutes)
Bottom blowdown	On time (Max)
Steam header Valve POP	ON time in seconds
Steam header Valve POP	OFF time in seconds
Alarm band	in uMhos
Temperature coefficient of conductivity	as % per degrees C
Scale Factor (SF)	conversion (conductivity to microS)

Alarm Outputs

SMS
Volt Free Relay contacts
LED
Software via AQUANet

Amplifier Enclosure

Material	Steel
Rating	IP 65 dimensions
Dimensions	300 x 200 x 120mm
Cable entry	cabl glands

Environmental

Operational temperature	0 to 55°C
Storage temperature	-15 to 85°C